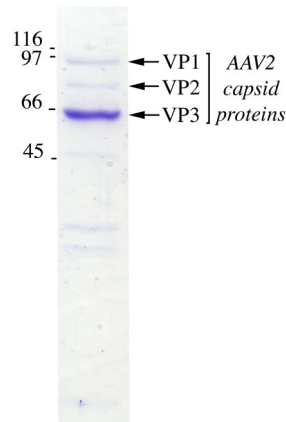


Code	GD100X-RV (GeneDetect rAVE™ gene delivery reagent).
Vector	AAV-SAR-CAG-XXX-WPRE-BGH (XXX = your gene of interest)
Vector description	The CAG promoter consists of the chicken B-actin promoter hybridised with the CMV immediate early enhancer sequence and is highly efficient in most tissue types. Addition of a scaffold attachment region (SAR) stabilises the WPRE regulatory element and the presence of a BGH polyadenylation sequence ensures transcription of the vector transgene following transduction.
Lot Number	88765
Quantity	0.3mL (300µl)
Purity	Affinity purified against immobilised heparan sulfate proteoglycan.
Titer/concentration	3.6×10^{10} <u>genomic</u> particles/ml
Presentation	Liquid in phosphate buffered saline (PBS) containing 1mM MgSO ₄
Storage and stability	Upon receipt spin contents of vial to collect sample, aliquot as necessary and store: 4°C for short term (<1 month), -20 °C or -80°C for long term. Avoid repeated freeze-thaw cycles.
Quality control	10µl was analysed by SDS-PAGE to verify purity.



Note: GeneDetect™ and rAVE™ are trademarks of GeneDetect.com Limited.

- Handling** Always wear laboratory gloves, protective glasses and a suitable protective laboratory coat when using rAVE reagents. Recent NIH guidelines state that "adeno-associated virus (AAV) types 1 through 4, and recombinant AAV constructs, in which the transgene does not encode either a potentially tumorigenic gene product or a toxin molecule and are produced in the absence of a helper virus" can in most cases be handled at biosafety level 1 (BL1). You should follow the guidelines set by your Institutional biosafety committee for the handling of adeno-associated virus.
- Disposal** rAVE reagents are susceptible to 5% phenol, 10% bleach, 10% Wescodyne or Virkon. We recommend using a fresh solution of 10% bleach for 30 minutes for decontamination.
- Applications** For *in vitro* applications, mix 2µl rAVE sample with 200µl pre-warmed culture media and apply per well to cells of 60 - 80% confluency (24 well plate). Allow at least three days for viral integration and gene expression before analysis. For *in vivo* applications, dose should be determined by end user.
- Refer to www.GeneDetect.com for a selection of protocols.
- References** For a comprehensive list of references refer to www.GeneDetect.com